

LOVE FOR SALE

AS RECORDED BY THE BUDDY RICH ORCHESTRA ON THE "BIG SWING FACE" CD

COMPOSED BY COLE PORTER
ARRANGED BY PETE MYERS

GUITAR

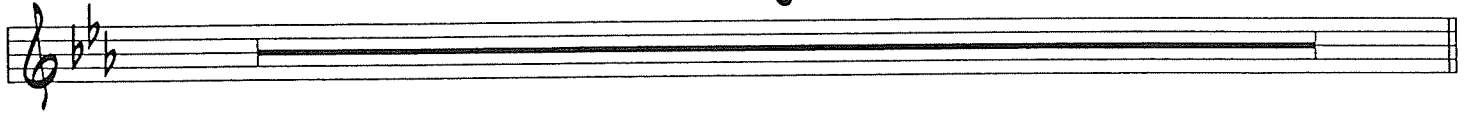
UP SWING $\text{♩} = 200$

8



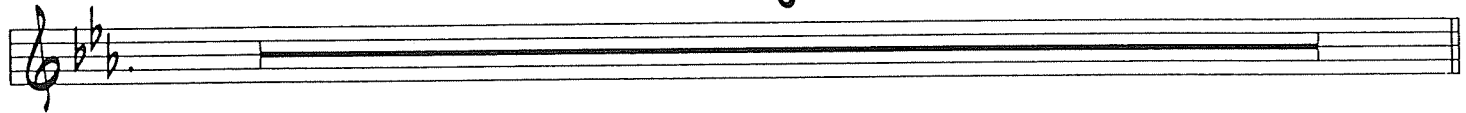
9

8



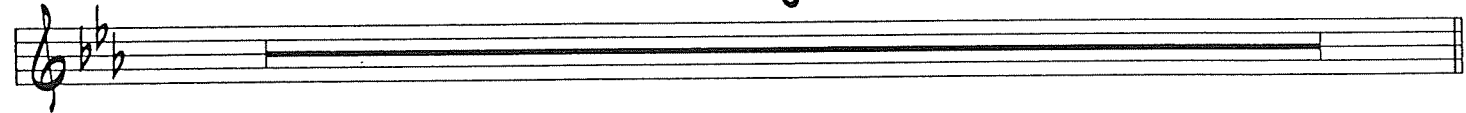
17

8



25

8



TURN PAGE

GUITAR - "LOVE FOR SALE" - PG - 2

33 Ebm17 Ab7(b9) Dbm17 Fm17 Bb7(#9) Ebm19 Ab7(b9)

mf

39 Dbm17 Db69 41 Bb9 Cb9 Bb9 Ebm17 Ebm16

45 Gm17-5 C7(#9) F7(b9) 49 Eb6

51 Bbm17 Eb6 Bbm16

57 Ebm19 Ab9 Ab13 Db69 Gb9

63

69 Eb69 Bbm16 Eb69 Bbm16

mf

77 Ebm17 Ab7 Dbm17 Gb9 Cm17-5

82 F7(#9) Bbm16 85 Eb69

GUITAR - "LOVE FOR SALE" - PG - 3

88 Eb⁶9 Bbm¹⁰ Ebm¹¹9

94 Ebm¹¹9/Ab A7(b9)(#5) Dbmaj9 Gb13 Gb9 Cm17-5 F7(#9) Bbm¹⁰

101 Ebm¹¹9 Ebm¹¹7 Ab9 Ebm¹¹9 Ab13 Dbmaj9 Db6 Dbmaj9

#

104 Fm17 Bb7(b9)(#5) Ebm¹¹9 Ebm¹¹7/Ab Ab9 Ebm¹¹7 Ab9 Ebm¹¹7 Ab9 Dbmaj9 Db6

109 Cb9 Bb13(b9) Bb7(b9)(#5) Ebm¹¹maj7 Ebm¹¹7 Ebm¹¹6 Gm17-5 C7(b9)(b5)

115 Fm17 Bb7(b9)(b5) 117 Eb⁶9 Bbm¹⁰

120 Eb⁶9 Bbm¹⁰ 125 Ebm¹¹9 Ab9

127 Dbmaj9 Gb13 Gb9 Cm17-5 F7(#9) 131 Bbm¹⁰ 7

TURN PAGE

GUITAR - "LOVE FOR SALE" - PG - 4

139

145

C6 Gm16 f

149

C6 Gm16

153

Cm17 F7(b9) Bbm7 Eb9

157

Amin7-5 D7(b9) Gmin

161

C6 Gmin

165

C6 Gm17 Gm16

169

Cm19 F7(b9) Bbm9 Eb9

173

Amin7-5 D7(b9) Gm16

GUITAR - "LOVE FOR SALE" - PG - 5

177

Cmin11

Cm19/F

BbMA7

G7(b9)

A musical staff in treble clef containing four measures. Each measure contains a series of diagonal slashes, indicating that the specific notes are not written out.

181

Cm17

F13

BbMA7

A musical staff in treble clef containing four measures. Each measure contains a series of diagonal slashes, indicating that the specific notes are not written out.

185

Dm17-5

G7(b9)

Cm17

Cm16

A musical staff in treble clef containing four measures. Each measure contains a series of diagonal slashes, indicating that the specific notes are not written out.

189

Em17-5

A7(b9)

Dm17-5

G7(b9)

A musical staff in treble clef containing four measures. Each measure contains a series of diagonal slashes, indicating that the specific notes are not written out.

193

C6

Gm16

±

A musical staff in treble clef containing four measures. Each measure contains a series of diagonal slashes, indicating that the specific notes are not written out.

197

C6

Gm16

A musical staff in treble clef containing four measures. Each measure contains a series of diagonal slashes, indicating that the specific notes are not written out.

201

Cm17

F9

BbMA7

Eb9

A musical staff in treble clef containing four measures. Each measure contains a series of diagonal slashes, indicating that the specific notes are not written out.

205

D7

F7(#9)

E7(#9)

Eb7(#9)

D7(#9)

Ab9

Gm16

4

A musical staff in treble clef containing four measures. The first three measures contain diagonal slashes. The fourth measure contains a whole note chord symbol. The staff ends with a double bar line and a key signature change to three flats (Bb, Eb, Ab).

TURN PAGE

GUITAR - "LOVE FOR SALE" - PG - 6

211

Ob6 Abm16 Ob6

216

Abm16 Obm17

220

Gb9 Cbm17 E9 Eb7 Gb7(#9) F7(#9) E7(#9)

224

Eb7(#9) 10 Eb7(#9) Abm17