

SIERRA MUSIC PRESENTS
THE JAZZ MASTERS SERIES

LOVE FOR SALE

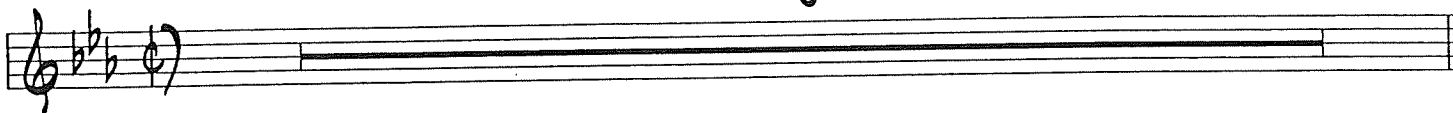
AS RECORDED BY THE BUDDY RICH ORCHESTRA ON THE "BIG SWING FACE" CD

PIANO

COMPOSED BY COLE PORTER
ARRANGED BY PETE MYERS

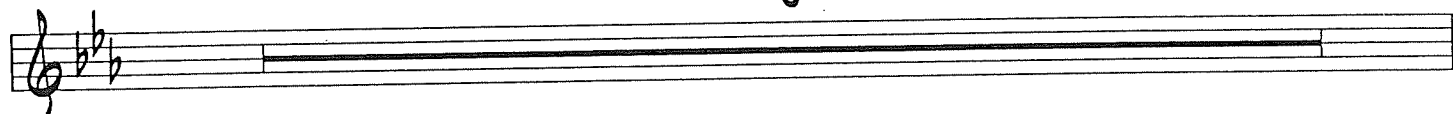
UP SWING $\text{♩} = 200$

8



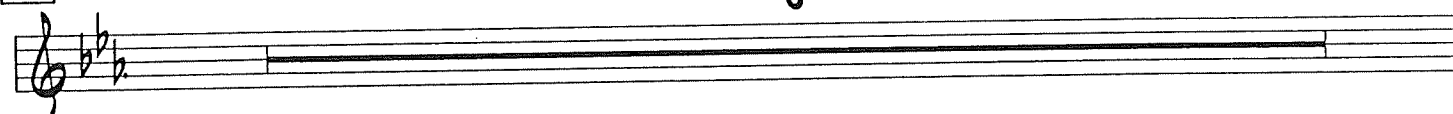
9

8



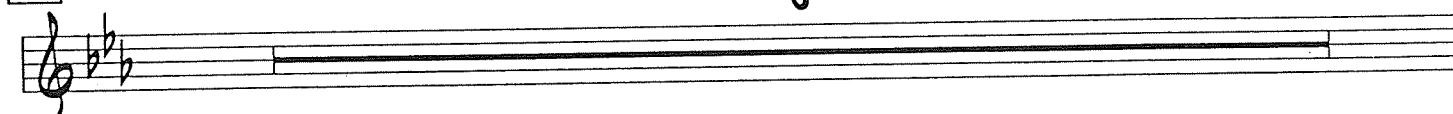
17

8



25

8



TURN PAGE

PIANO - "LOVE FOR SALE" - PG - 2

33 Ebm17 Ab7(b9) Dbm17 Fm17 Bb7(#9) Ebm19 Ab7(b9)

mf

39 Dbm17 Db69 41 Bb9 Cb9 Bb9 Ebm17 Ebm16

45 Gm17-5 C7(#5) F7(b5) 49 Eb6

51 Bbm11 Eb6 Bbm16

57 Ebm19 Ab9 Ab13 Db69 Gb9

65

69 Eb69 Bbm16 Eb69 Bbm16

mf

77 Ebm17 Ab7 Dbm17 Gb9 Cm17-5

82 F7(#9) Bbm16 85 Eb69

PIANO - "LOVE FOR SALE" - pg - 3

88 Eb⁶9 Bb^b11b Bb^b11b 93 Eb^b11b

Musical staff 88-93 with notes indicated by slashes. Chord changes are written above the staff.

94 Eb^b11b/Ab Ab7(^b9) Db^b11b Gb^b13 Gb^b9 Cm17-5 F7([#]9) Bb^b11b

Musical staff 94-99 with notes indicated by slashes. Chord changes are written above the staff.

101 Eb^b11b Eb^b11b Ab9 Eb^b11b Ab13 Db^b11b Db^b6 Db^b11b

#

Musical staff 101-103 with notes indicated by slashes. Chord changes are written above the staff. A sharp sign is centered below the staff.

104 Fm17 Bb7(^b9) Eb^b11b Eb^b11b/Ab Ab9 Eb^b11b Ab9 Eb^b11b Ab9 Db^b11b Db^b6

Musical staff 104-109 with notes indicated by slashes. Chord changes are written above the staff.

109 Cb9 Bb13(^b9) Bb7([#]5) Eb^b11b11b7 Eb^b11b Eb^b11b Gm17-5 C7(^b5)

Musical staff 109-114 with notes indicated by slashes. Chord changes are written above the staff.

115 Fm17 Bb7(^b9) 117 Eb⁶9 Bb^b11b

Musical staff 115-119 with notes indicated by slashes. Chord changes are written above the staff.

120 Eb⁶9 Bb^b11b 125 Eb^b11b Ab9

Musical staff 120-124 with notes indicated by slashes. Chord changes are written above the staff.

127 Db^b11b Gb^b13 Gb^b9 Cm17-5 F7([#]9) 131 Bb^b11b 7

Musical staff 127-131 with notes indicated by slashes. Chord changes are written above the staff. The staff ends with a double bar line and a fermata.

TURN PAGE

PIANO - "LOVE FOR SALE" - PG - 4

139

Musical staff with bass clef, key signature of two flats (B-flat and E-flat), and a melodic line. The staff contains several measures with notes, some marked with accents (>) and slurs. A fermata is placed over the final measure of the line, which is marked with a '2' above it. A double bar line with repeat dots is located below the staff.

145

C6 G#16

Musical staff with treble clef. The staff contains four measures, each with a slash through it, indicating a placeholder for a chord. The chords are labeled as C6 and G#16.

149

C6 G#16

Musical staff with treble clef. The staff contains four measures, each with a slash through it, indicating a placeholder for a chord. The chords are labeled as C6 and G#16.

153

C#17 F7(b9) Bb#17 Eb9

Musical staff with treble clef. The staff contains four measures, each with a slash through it, indicating a placeholder for a chord. The chords are labeled as C#17, F7(b9), Bb#17, and Eb9.

157

A#17-5 D7(b9) G#11

Musical staff with treble clef. The staff contains four measures, each with a slash through it, indicating a placeholder for a chord. The chords are labeled as A#17-5, D7(b9), and G#11.

161

C6 G#11

Musical staff with treble clef. The staff contains four measures, each with a slash through it, indicating a placeholder for a chord. The chords are labeled as C6 and G#11.

165

C6 G#17 G#16

Musical staff with treble clef. The staff contains four measures, each with a slash through it, indicating a placeholder for a chord. The chords are labeled as C6, G#17, and G#16.

169

C#19 F7(b9) Bb#9 Eb9

Musical staff with treble clef. The staff contains four measures, each with a slash through it, indicating a placeholder for a chord. The chords are labeled as C#19, F7(b9), Bb#9, and Eb9.

173

A#17-5 D7(b9) G#16

Musical staff with treble clef. The staff contains four measures, each with a slash through it, indicating a placeholder for a chord. The chords are labeled as A#17-5, D7(b9), and G#16.

PIANO - "LOVE FOR SALE" - PG - 5

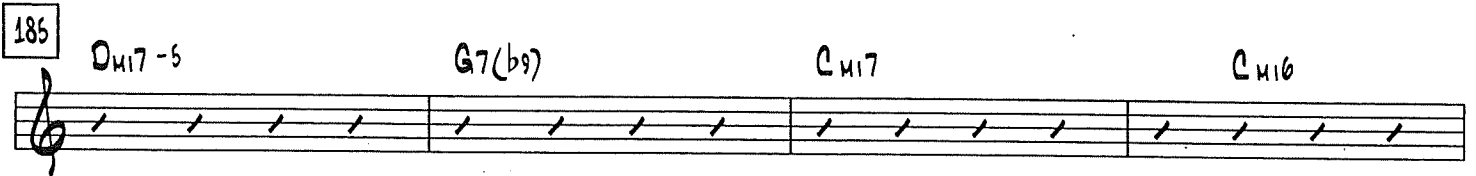
177 C minor II C minor 9/F Bb major 7 G7(b9)



181 C minor 7 F13 Bb major 7



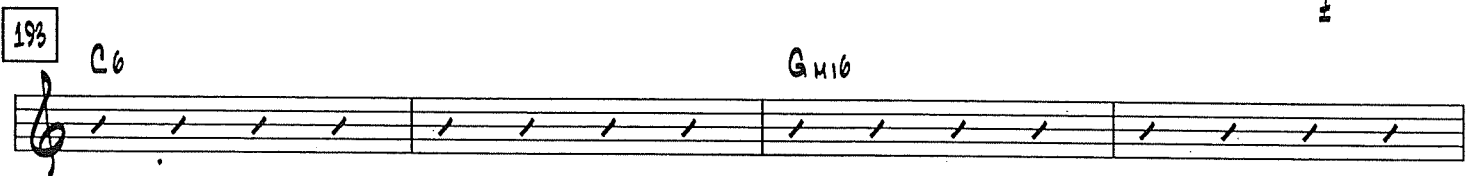
185 D minor 7 - 5 G7(b9) C minor 7 C minor 6



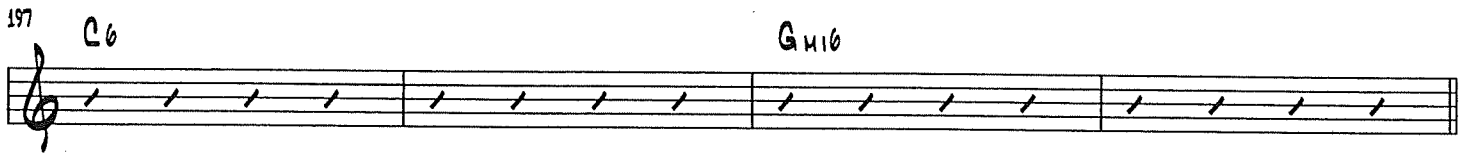
189 E minor 7 - 5 A7(b9) D minor 7 - 5 G7(b9)



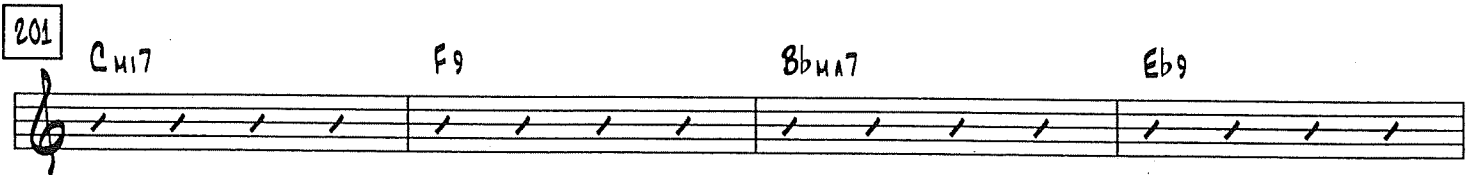
193 C6 G minor 6



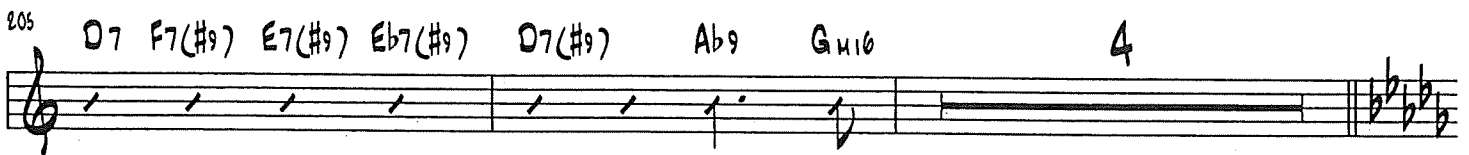
197 C6 G minor 6



201 C minor 7 F9 Bb major 7 Eb9



205 D7 F7(#9) E7(#9) Eb7(#9) D7(#9) Ab9 G minor 6 4

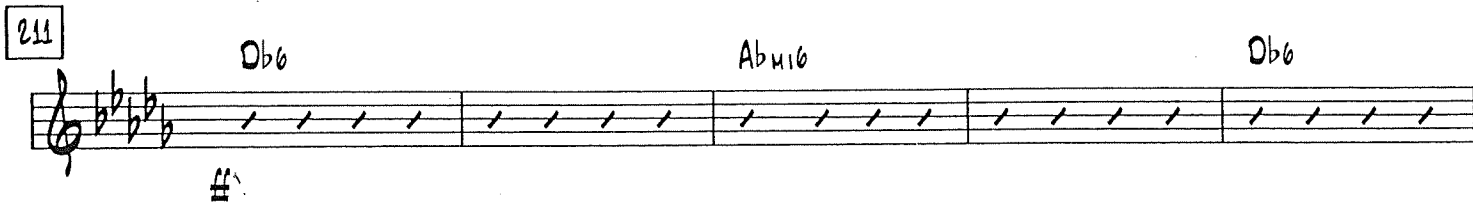


TURN PAGE

PIANO - "LOVE FOR SALE" - PG - 6

211

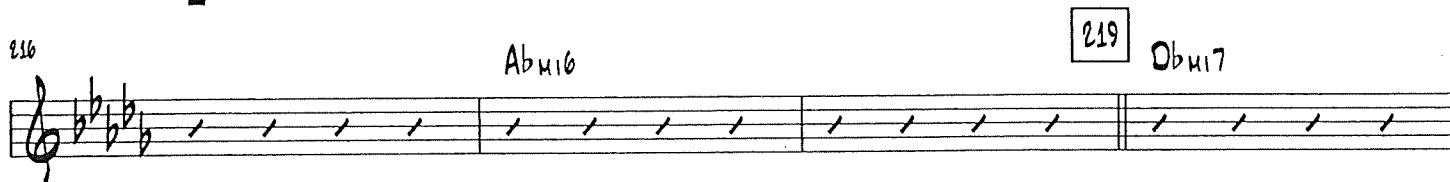
Db6 Abm16 Db6



216

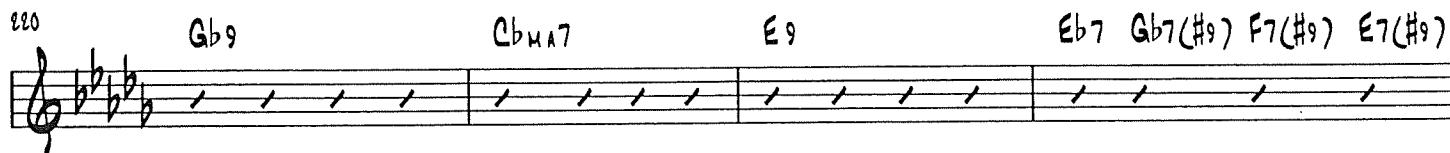
Abm16

219 Dbm17



220

Gb9 Cbm17 E9 Eb7 Gb7(#9) F7(#9) E7(#9)



224

Eb7(#9)

10

Eb7(#9) Abm17

